



Logitech are world leaders in the design of technologies that let humans interact with computers in novel ways and we understand the importance of related research in this ever-expanding area. **The area of computer games and the explosion of new and related interaction techniques, styles, and devices are of particular interest to us.** This research is cross disciplinary in nature and is situated at the intersection of computer science and cognitive psychology. **We felt that Lero and access to researchers in the University of Limerick would give us the correct cross-disciplinary team to take on the task.** It has been a very successful collaboration running for over six years with four more currently planned.

*Niall White, Principal Design Engineer for Gaming, Logitech*



Since Valeo has engaged with Lero in 2017 it has allowed us to significantly scale up the size of our research projects while giving us access to expand our research collaborations across multiple Lero member institutions. **The collaboration with Lero has led to a very smooth process of interaction with multiple academic leaders in our field of research** creating the potential for significant future positive impact for Valeo as a result.

*Jonathan Horgan, Deep Learning & Computer Vision Architecture Manager, Valeo Vision Systems*



Lero is of huge benefit to demonstrate **industry-research collaboration** and the art of the possible...

*Niall O'Callaghan, IDA Business & Relationship Manager, Mid West Region*

## CONNECT WITH US

**Joe Gibbs**  
General Manager  
Lero, the SFI Research Centre for Software  
Joe.Gibbs@lero.ie  
@LeroCentre | lero-centre

lero.ie



Software for a better world



LERO PARTNERS WITH 5 OF THE TOP 12 TECHNOLOGY COMPANIES IN THE WORLD

HOST INSTITUTION



PARTNER INSTITUTIONS



lero.ie



# ABOUT LERO

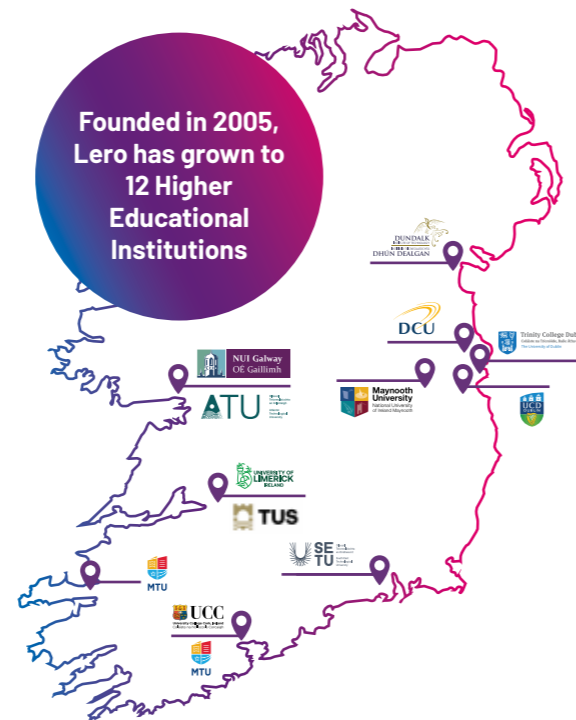
Lero, the Science Foundation Ireland Research Centre for Software, brings together expert software teams from universities and institutes of technology across Ireland in a co-ordinated centre of research excellence with a strong industry focus.

## GROWTH & IMPACT



### Lero's Responsible Software Engineering agenda underpins our strategic research areas

and ensures that software delivers values such as privacy, security, trust and inclusion; key topics for companies now and in the future.

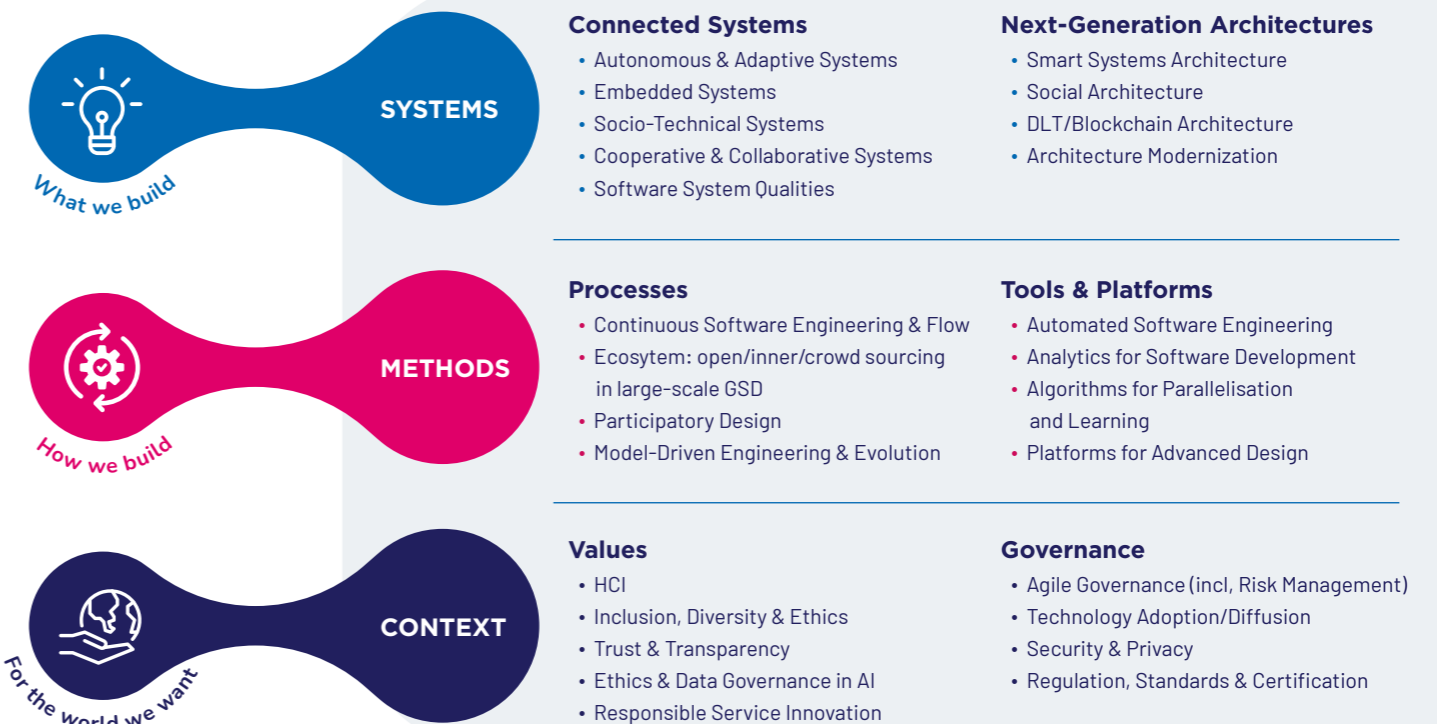


### We work across multiple sectors

with our industry partners who are leaders in a wide range of application domains from **driverless cars** to **artificial intelligence** and **ICT, cybersecurity, fintech, govtech, smart communities, agritech** and **healthtech**.



Our research brings together multidisciplinary research teams to cover three overarching areas:



## WORKING TOGETHER



Collaboration is at the very core of what we do. Our industry partners are a vital part of the research centre and together we address exciting new opportunities in our partners' markets that **deliver economic value** and help **future proof companies for the challenges that lie ahead in increasingly competitive environments**.

**Lero has worked with over 80 industry partners globally.** Lero works with industry partners to identify and solve specific problems, working to create or expand the R&D footprint of companies both nationally and internationally.

### PROCESS OF ENGAGEMENT

1. Identify the opportunity or problem
2. Lero assembles expert research team
3. Define and agree project scope
4. Access funding support
5. Collaborate and deliver

## BENEFITS TO YOU

- Access to world leading researchers. Lero brings together interdisciplinary teams from across multiple disciplines
- Technology & Knowledge Transfer
- Use of state-of-the-art equipment and technology
- Industry-focused solutions delivering commercial value