

**Open for
new ideas**

SFI Future
Innovator Prize



sfi.ie/funding



Science Foundation Ireland

Future Innovator Prize

*Driving STEM-led innovation to address
society's greatest challenges*

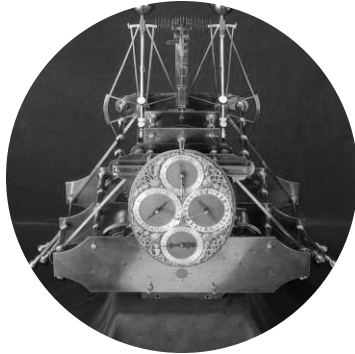
Information Workshop
8th October, 2018

Contact: Dr Stephen O'Driscoll
stephen.odriscoll@sfi.ie

Few sign up to science for a glamorous lifestyle, colossal salary or generous dental plan. They do it to gain insights and knowledge and, they hope, **to make the world a better place**. Too often, that last objective proves hard to achieve — not because of uncaring researchers living in ivory towers, but because the way in which some types of study are done and rewarded does not set the correct priorities. **That needs to change**.

“The best research is produced when researchers and communities work together”, Nature 562, 7 (2018)

History of Challenge Prizes



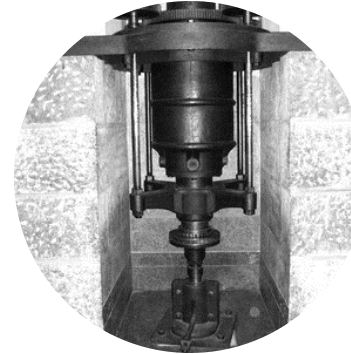
Longitude Prize
1714

Winner: John Harrison



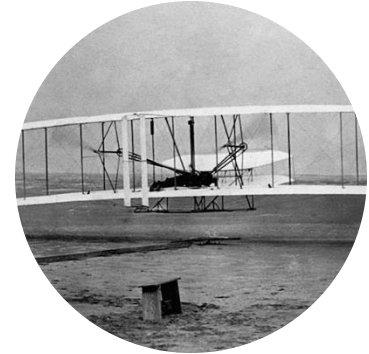
**French Food
Preservation Prize**
1795-1809

Winner: Nicolas Appert



Turbine Prize
1823-1827

Winner: Benoit Fourneyron



**Prix d'Aviation Michelin
(Michelin Prize)**
1908

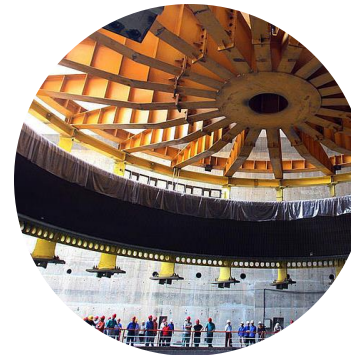
Winner: Wilbur Wright



Precise time information
is integral to GPS



Europe produces about
25 billion cans of food every year



Three Gorges Dam uses turbines
10m in diameter capable of
rotation speeds of 75 revolutions
per minute



From 124.7 km
to 3,790 km

Challenge Prizes Today



Ansari XPRIZE for Suborbital Spaceflight



Progressive Insurance Automotive XPRIZE



Northrop Grumman Lunar Lander XCHALLENGE



Qualcomm Tricorder XPRIZE



Mobility Unlimited Challenge

Societal Challenges





Visionary



Inspirational



Achievable

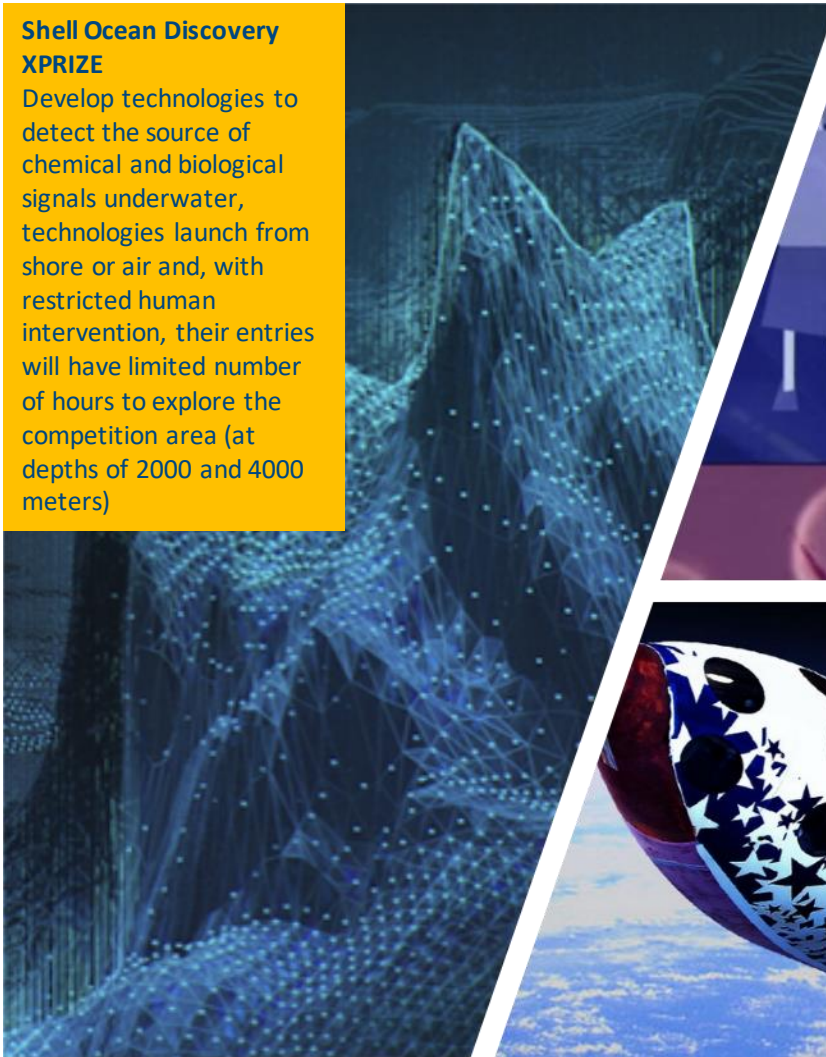
What is a Challenge?

- A challenge is a **bold and ambitious goal** that drives innovation toward addressing a **complex, often intractable, societal issue/problem**.
- Achieving the stated goal, by developing a solution to a challenge, has the potential for **transformative societal impact**.
- Solutions to challenges often comprise both **technical and non-technical** aspects. Challenges always involve multiple stakeholders/beneficiaries and end-users.
- A challenge can be an obstacle or **opportunity**.
- A challenge should be: **visionary, inspirational** and **achievable**.

Challenge Examples

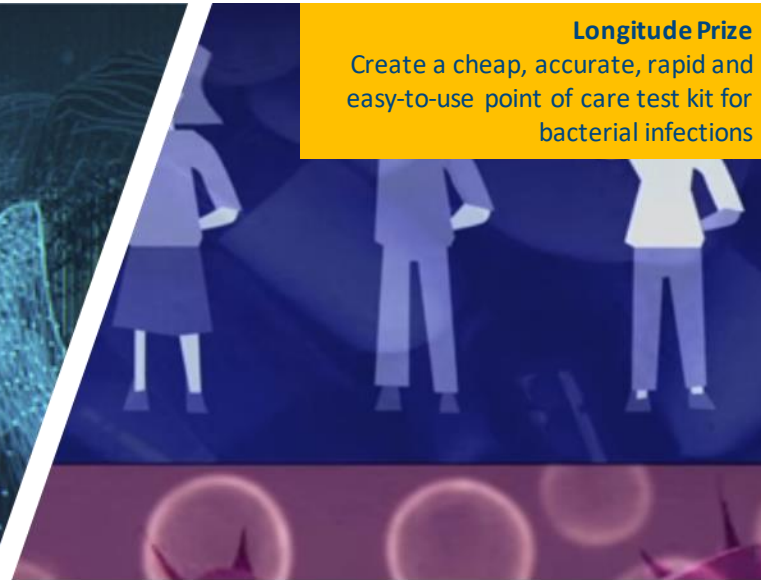
Shell Ocean Discovery XPRIZE

Develop technologies to detect the source of chemical and biological signals underwater, technologies launch from shore or air and, with restricted human intervention, their entries will have limited number of hours to explore the competition area (at depths of 2000 and 4000 meters)



Longitude Prize

Create a cheap, accurate, rapid and easy-to-use point of care test kit for bacterial infections



Ansari Prize

Build a reliable, reusable, privately financed, manned spaceship capable of carrying three people to 100 kilometres above the Earth's surface twice within two weeks



What is Challenge Funding?

- **Incentivizes and rewards** RD&I activities to develop disruptive and impactful solutions to key national societal and economic challenges.
- **Fosters collaborative, interdisciplinary and convergent research** activities that may, in turn, lead to new discoveries and disruptive innovations that have the potential to transform how we live.
- Creates the **opportunity for an equity-based engagement between stakeholders**, enabling them to identify appropriate co-investment of resources required to share the **risks and rewards** that arise by addressing challenges.



**Incentivise
& Reward**

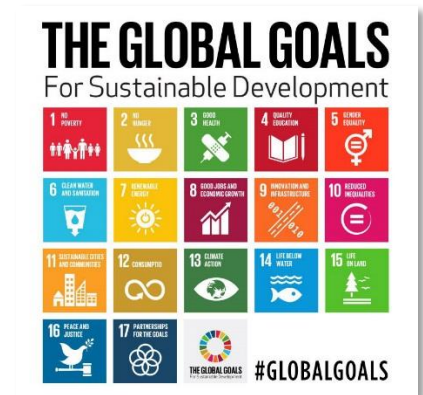


Collaboration



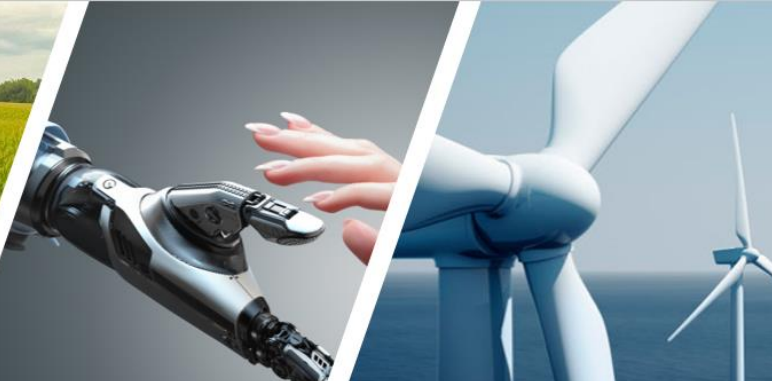
Equity

Context



Ireland's Opportunity

Advanced, agile and highly networked
innovation ecosystem



Potential to **drive societal and economic impact here** in Ireland
but also give Ireland a unique advantage in addressing challenges
that have **global implications**



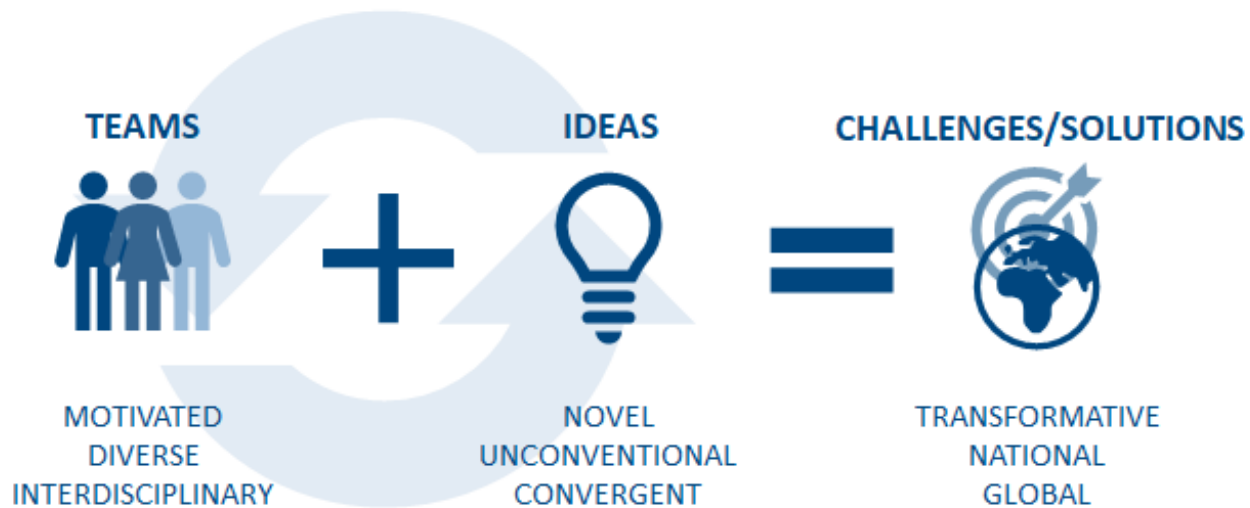
Challenge funding can **amplify our innovation capabilities** to create sustainable, equitable and
innovation-led growth

Ireland – The **world's test-bed**
for challenge funding

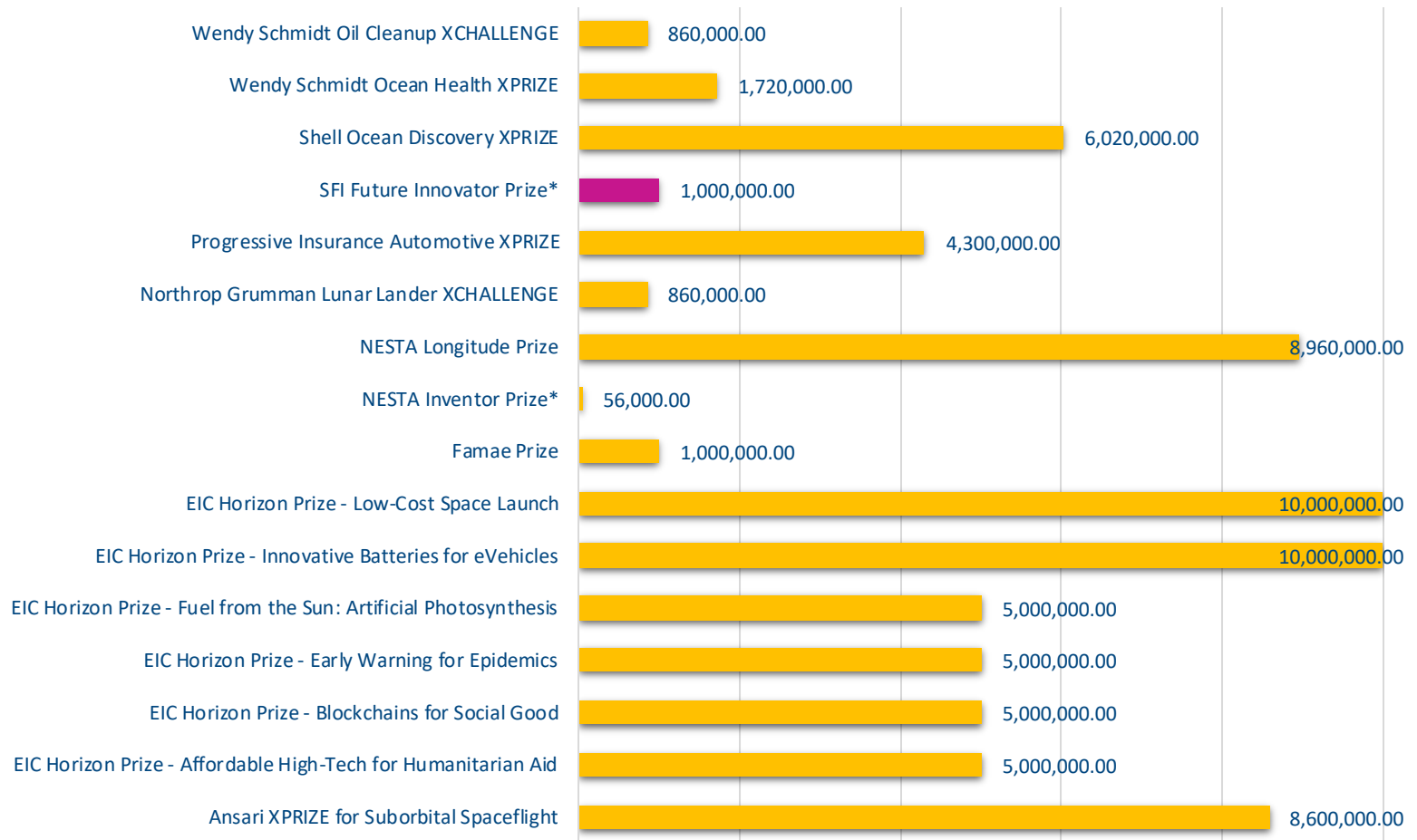


SFI Future Innovator Prize

The overarching ambition of the SFI Future Innovator Prize is to **enable the development of disruptive STEM-led solutions to key national challenges.**



Scale of Challenge Prizes



* National

Objectives of the Prize

- To support development of **novel, potentially disruptive, technologies** to address significant national and global challenges.
- To support the formation of **high-performance interdisciplinary teams** based on integration of diverse STEM disciplines and complementary skillsets.
- To promote **convergence** of knowledge, practice and methods from different disciplines and sectors.
- To promote **engagement** between researchers and stakeholders/beneficiaries of research.
- To **accelerate societal impact** from publicly funded research.

SFI Future Innovator Prize

What Makes Something Disruptive?

<h1>6</h1> <p>QUESTIONS to judge whether an innovation is disruptive</p>	<p>1 Does it target nonconsumers or people who are overserved by an incumbent's existing offering in a market?</p>	<p>2 Is the offering not as good as an incumbent's existing offering as judged by historical measures of performance?</p>	<p>3 Is the innovation simpler to use, more convenient, or more affordable than the incumbent's existing offering?</p>
	<p>4 Does the offering have a technology enabler that can carry it upmarket and allow it to improve?</p>	<p>5 Is the technology paired with a business model innovation that allows it to be sustainable?</p>	<p>6 Are existing providers motivated to ignore the new innovation and not threatened at the outset?</p>

Learn more at www.ChristensenInstitute.org

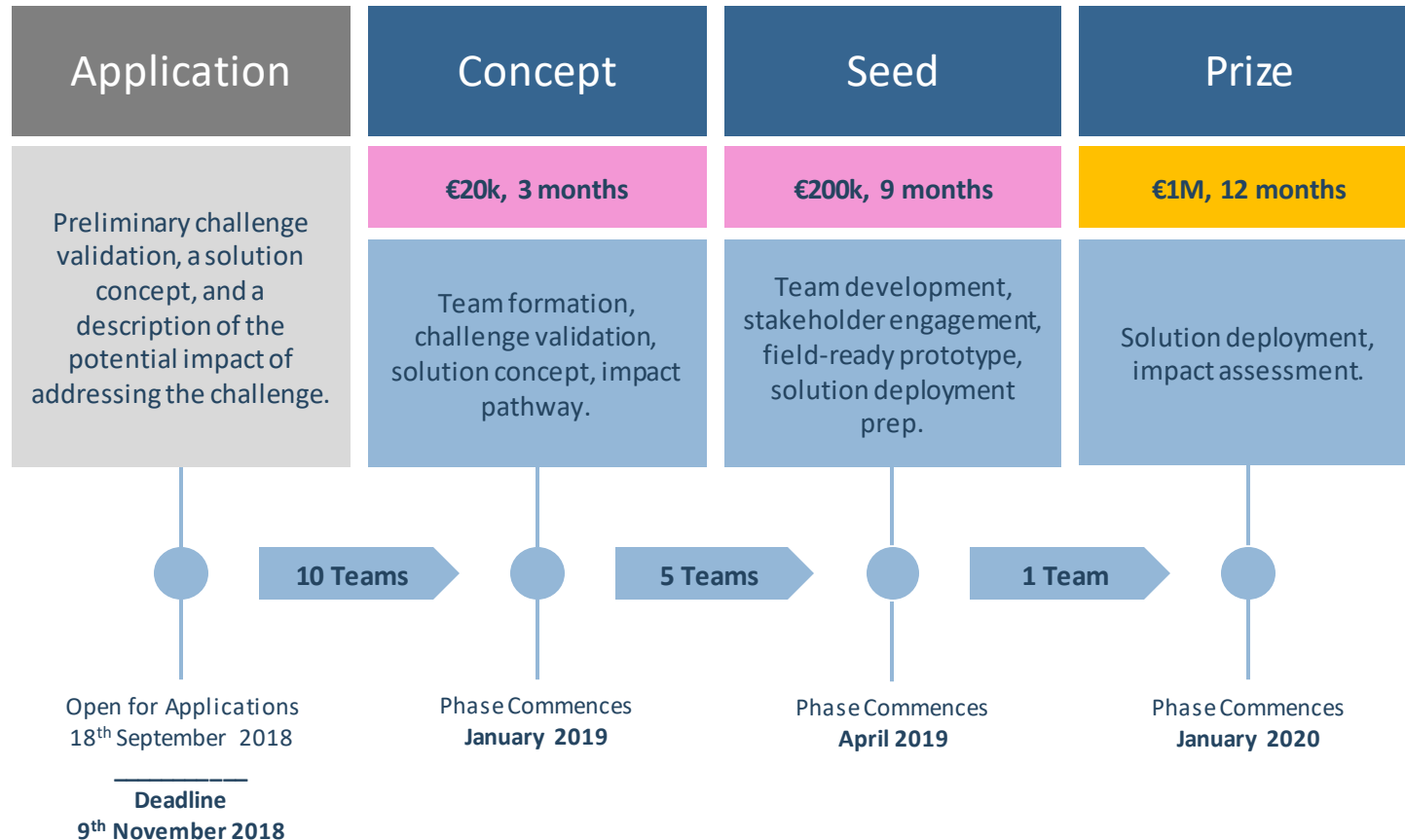
SFI Future Innovator Prize

Venture Model

- Programme will be **highly competitive**, operate to **aggressive timelines** and employ **performance-based funding release** (teams that do not progress will have funding decommitted)
- SFI will employ a **venture model** in management of teams/awards
 - Your success is our success
 - Not just invest but be invested
- SFI will **leverage its network and its resources** (where appropriate) to support teams as they progress through process
 - Mentorship/Training
 - Networking/"Opening Doors"
 - Awareness Raising
 - Profiling e.g. Social Media, Events

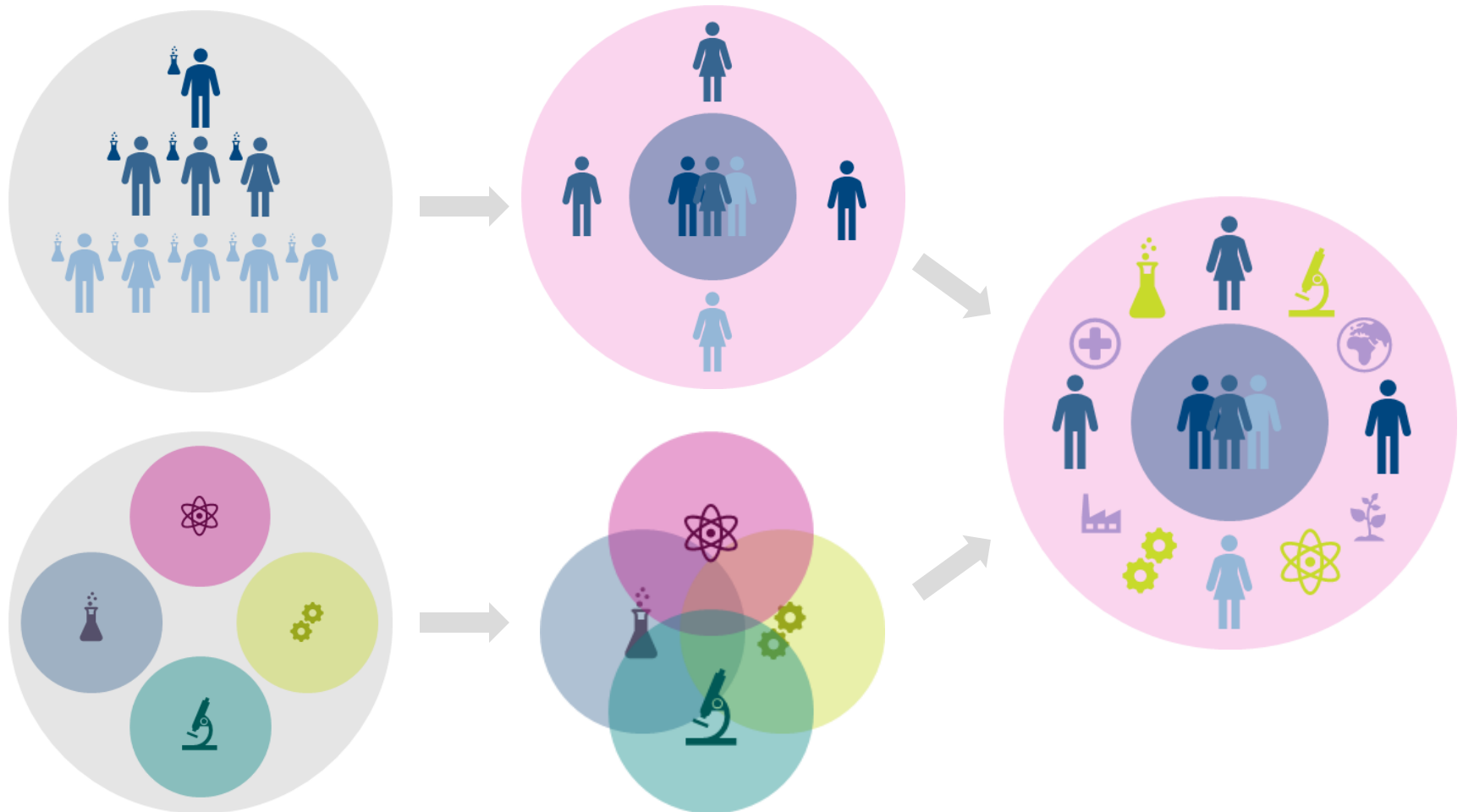
SFI Future Innovator Prize

Structure & Funding



Focus On Teams

Diverse, Interdisciplinary, Convergent



SFI Future Innovator Prize

Who Can Apply?



*Participation by postgraduate students (MSc/MEng, PhD) is strongly encouraged, however, they may not be Team Lead (they can be the Team Co-Lead)

SFI Future Innovator Prize

Who Can Apply?

<p>Team Lead</p> <p>Team Co-Lead</p>	<p>Member of Academic Staff <i>OR</i> Contract Researcher <i>AND</i> PhD (or equiv.) holder</p>	<p>Should have track record demonstrating: research publication, securing of research grants as lead investigator or as co-investigator; and experience, capability and authority to mentor and supervise postgraduate students and team members.</p>
<p>Team Co-Lead</p>	<p>Postgraduate student (i.e. a full-time student undertaking a postgraduate qualification, e.g. MSc/MEng, PhD, by research in a STEM discipline</p>	<p>NA</p>

SFI Future Innovator Prize

Postgrads & Students



SFI Future Innovator Prize

Who Can Apply?

Scenario	Lead Applicant	Co-Lead Applicant	
A	Academic Staff or Contract Researcher; Holds a PhD (or equivalent)	Academic Staff or Contract Researcher; Holds a PhD (or equivalent)	Permitted
B	Academic Staff or Contract Researcher; Holds a PhD (or equivalent)	Full-time postgraduate student at an eligible Irish research body	Permitted
C	Full-time postgraduate student at an eligible Irish research body	Academic Staff or Contract Researcher; Holds a PhD (or equivalent)	Not Permitted
D	Full-time postgraduate student at an eligible Irish research body	Full-time postgraduate student at an eligible Irish research body	Not Permitted

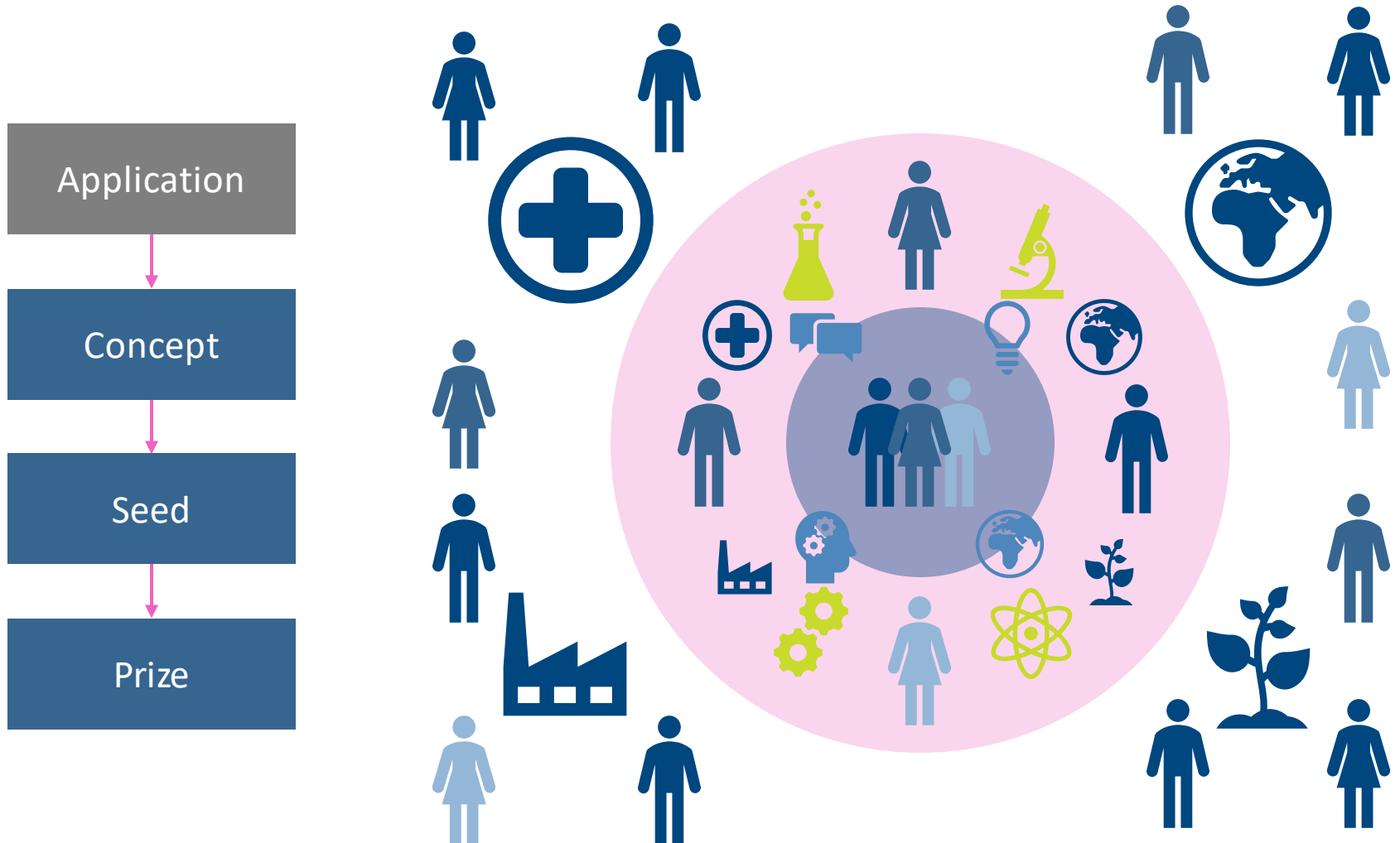
Societal Impact Champion

Role & Examples



SFI Future Innovator Prize

Team/Solution Evolution



SFI Future Innovator Prize

Application

Section 1	Section 2	Section 3	Section 4
Applicant Team & Idea	Team, Challenge, Solution & Societal Impact	Budget & Resources	Authorisation
<p>Summary</p> <ul style="list-style-type: none"> Team Idea <p>Idea</p> <ul style="list-style-type: none"> Visionary about the challenge? Unconventional about your approach Why you expect it to succeed? How it will deliver impact? 	<p>Team</p> <ul style="list-style-type: none"> Unique perspective and unfair advantage <p>Challenge</p> <ul style="list-style-type: none"> Importance and the opportunity for Ireland Visionary and inspirational Engagement/Barriers <p>Solution</p> <ul style="list-style-type: none"> Novel, unconventional Disruptive potential Feasible/viable Risks <p>Outcomes/Impact</p> <ul style="list-style-type: none"> What and When? 	<p>Budget</p> <ul style="list-style-type: none"> Breakdown of the indicative eligible direct costs <p>Concept Phase (€20k)</p> <ul style="list-style-type: none"> Staff Materials & Consumables Travel <p>Seed Phase (€200k)</p> <ul style="list-style-type: none"> Staff Equipment Materials & Consumables Travel <p>Consult SFI Grant Budget Policy</p>	<p>Authorisation for submission by the host research body of the lead applicant</p>
			Section 5
			Curricula Vitae
			Core Applicant Team
			Section 6
			Letters of Support
			Host Research Body, Co-Applicant*, Societal Impact Champion

SFI Future Innovator Prize

Eligible Costs*

Concept	<p>Staff Contributions to salaries</p> <p>Materials & Consumables Promotional materials, engagement activities, hackathons, design-sprints</p> <p>Travel Stakeholder Visits, Meetings</p>
€20k, 3 months	
<p>Team formation, challenge validation, solution concept, impact pathway.</p>	

Seed	<p>Staff Contributions to salaries (researchers, technicians, admin staff – subject to justification), stipends</p> <p>Equipment Laptops, instrumentation</p> <p>Materials & Consumables Laboratory or engineering materials/consumables, promotional materials, engagement activities, hackathons, design-sprints</p> <p>Travel Stakeholder Visits, Meetings, Workshops</p>
€200k, 9 months	
<p>Team development, stakeholder engagement, field-ready prototype, solution deployment preparation.</p>	

*Please Consult Research Offices, SFI Grant Budget Policy

Challenge Canvases

CHALLENGE CANVAS #1

TITLE: _____



Visionary

Why is this challenge visionary? Will it require a novel solution?

Inspirational

How is this challenge idea going to inspire those involved and others to become involved? How will this challenge support engagement between the public/private sectors? How will it capture the imagination of the general public?

Achievable

How is this challenge idea ambitious yet achievable? Can it be addressed in the timeframe of 3-5 years? What resources are needed to address this challenge? What is the opportunity and why now? Would an interdisciplinary, STEM-led approach enhance achievability?

Impact

What social and economic impact will addressing this challenge give rise to? How will its outputs and outcomes deliver impact? Who will benefit from solutions to this challenge? How will they benefit?

Barriers

What are the current barriers to addressing this challenge? How can they be addressed? What are the opportunities from addressing these barriers?

CHALLENGE CANVAS #2

TITLE: _____



Inputs

People, equipment, infrastructure, funding, services, partners, stakeholders.



What Inputs are needed to address barriers?
E.g. Expertise from industry, regulator, VC company, national funding agency.

Actions

What actions/tasks/work needs) to be undertaken to achieve successful outcomes?



What Actions are needed to address barriers?
E.g. An industry partner to translate academic research to market quickly, or
A regulatory process needs to be changed to accelerate innovation, or
A VC fund needs to be set up in advance to ensure commercial success, or
A new national funding programme need to be developed.

Outputs

What are the key outputs? Research projects, prototypes, software, pilot line, partnership established, funding available.

E.g. Regulation changed, policy changed, investment fund created, software completed, prototype developed.

Impact

What are the outcomes? Increase/decrease in, enhancement in performance etc. Ultimately what impact will be realised for the economy and society?

Success

What will be achieved? What will be measured? What is the timeframe?

Challenge Canvases


CHALLENGE CANVAS #1

TITLE: _____


Visionary

 Why is this challenge visionary? Will it require a novel solution?

Inspirational

 How is this challenge idea going to inspire those involved and others to become involved? How will this challenge support engagement between the public/private sectors? How will it capture the imagination of the general public?


Achievable

 How is this challenge idea ambitious yet achievable? Can it be addressed in the timeframe of 3-5 years? What resources are needed to address this challenge? What is the opportunity and why now? Would an interdisciplinary, STEM-led approach enhance achievability?

Impact

 What social and economic impact will addressing this challenge give rise to? How will its outputs and outcomes deliver impact? Who will benefit from solutions to this challenge? How will they benefit?

Barriers

 What are the current barriers to addressing this challenge? How can they be addressed? What are the opportunities from addressing these barriers?

Challenge Canvases

CHALLENGE CANVAS #2

TITLE: _____

Inputs

 People, equipment, infrastructure, funding, services, partners, stakeholders.



What Inputs are needed to address barriers?

E.g. Expertise from industry, regulator, VC company, national funding agency.

Actions


 What actions/tasks/work need(s) to be undertaken to achieve successful outcomes?



What Actions are needed to address barriers?


E.g.
 An industry partner to translate academic research to market quickly.
 or
 A regulatory process needs to be changed to accelerate innovation.
 or
 A VC fund needs to be setup in advance to ensure commercial success.
 or
 A new national funding programme needs to be developed.

Outputs


 What are the key outputs?
 Research projects, prototypes, software, pilot line, partnership established, funding available.

E.g. Regulation changed, policy changed, investment fund created, software completed, prototype developed.

Impact

 What are the outcomes?
 Increase/decrease in, enhancement in performance etc.;
 Ultimately what Impact will be realised for the economy and society?

Success

 What will be achieved?
 What will be measured?
 What is the timeframe?

Key Dates



General

- Please consult the SFI Future Innovator Prize webpage for updates.
- Please consult the Research Impact section on the SFI website.
- Submit completed application forms to innovation@sfi.ie
- For further information/queries, please email innovation@sfi.ie

SFI Future Innovator Prize Team



Stephen O'Driscoll
Programme Manager



Lisa Higgins
Head of Innovation



Margie McCarthy
Interim Director, Innovation & Education



Orla O'Neill
Administration Manager