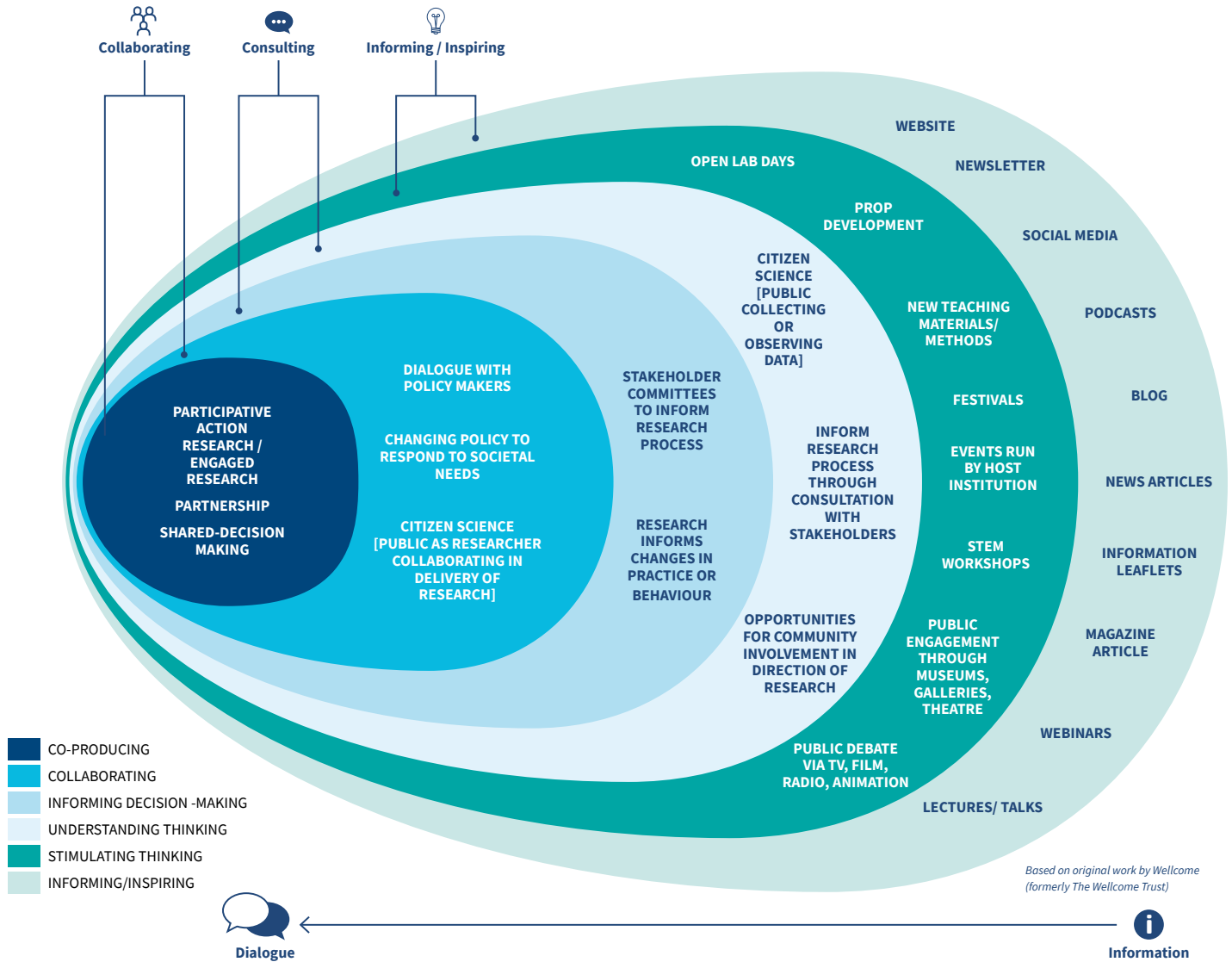


Figure 1 - SFI Education and Public Engagement



**Notes:**

1. It should be noted that the activities outlined in the schematic are not exhaustive. For example, public/patient involvement (PPI) and citizen juries are recognised methods of collaboration and co-production.
2. As one moves from the outside of the schematic to the core, the focus moves from awareness raising and informing to two-way dialogue and empowerment in decision-making. While the scale of audience reach may decrease with progression from the outer layers to the inner ones, the depth of engagement and value increases significantly.