

Why apply for an RS-SFI University Research Fellowship?

Megan Falck – Scheme Manager, UK
Grants



Contents

- Introduction to the Royal Society
- Strategic Priorities
- RS-SFI University Research Fellowship
- Application Process
- Why apply to the Royal Society?
- Contact details



Founded in 1660, the Royal Society is the independent scientific academy of the UK, dedicated to promoting excellence in science.

The Society's work is supported by 1665 Fellows and Foreign Members. 50 new Fellows are elected each year.



Strategic Priorities

- **Promoting excellence in science**
- **Supporting international scientific collaboration**
- **Demonstrating the importance of science to everyone**

2016 SFI-University Research Fellows

Dr Sinead O'Keeffe



Dr Richard Hobbs



Dr John Goold



Dr Morgan Fraser



Dr Aidan McDonald



RS-SFI University Research Fellowships

- Our funding sources are from the Department for Business, Energy & Industrial Strategy (UK) and **Science Foundation Ireland**
- 44 Research Fellow appointments in 2016-5 are SFI-URFs
- Approx. 298 scientists are currently supported through the URF Scheme – 11 are SFI-URFs

“My University Research Fellowship has given me the freedom and leverage to develop a substantial research programme, along with providing the underpinning security to build long-term research plans.”

Dr Michelle Moram
University Research Fellow
University of Cambridge



Who can apply?

There are no nationality restrictions

- **3-8 years postdoctoral experience**
- **Must not hold a permanent academic post**
- **Must not hold a Fellowship equivalent to a URF**

Note: career breaks are taken into account when assessing eligibility

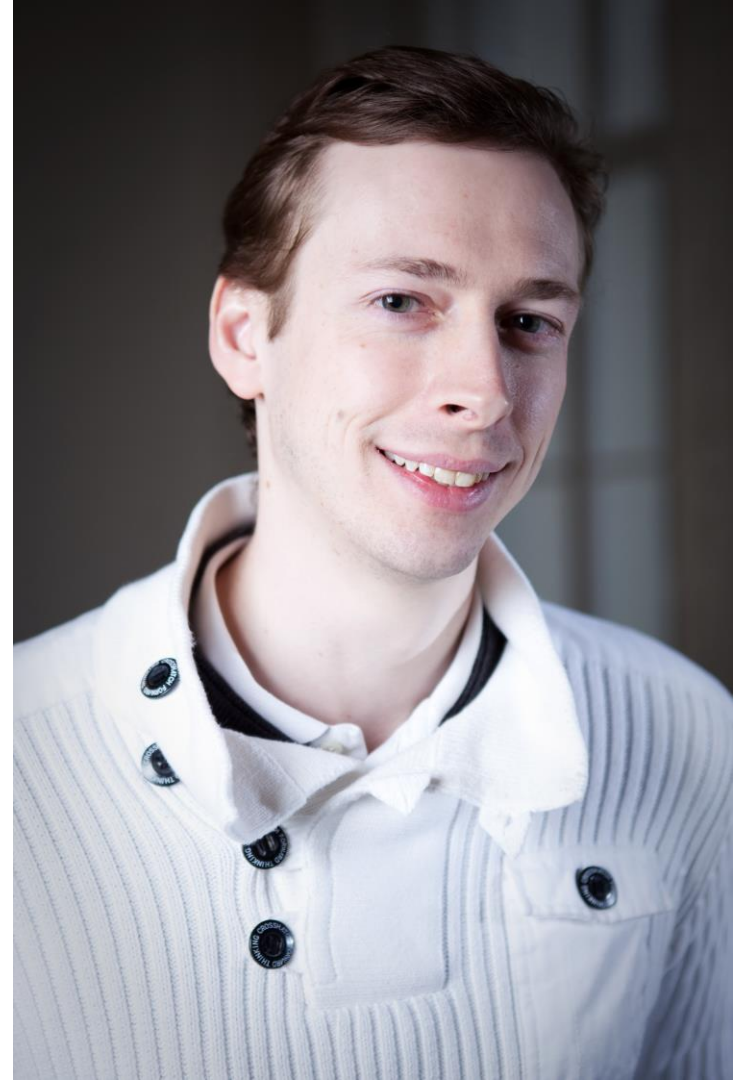
What support is offered?

- **Basic Salary, Research expenses** (€15,000 in Year 1 and €13,000 in subsequent years), 30% contribution to **Overheads**
- Expected to commence on 1 October 2018
- 5 years in first instance, potential 3 year renewal
- Fellowships can be held **flexibly**

RS-SFI University Research Fellowship

“I've taken 6 months paternity leave during my URF; my partner and I split the parental leave 50/50. The Royal Society have completely supported of this. For both maternity and paternity leave, the duration of the fellowship is simply extended accordingly.”

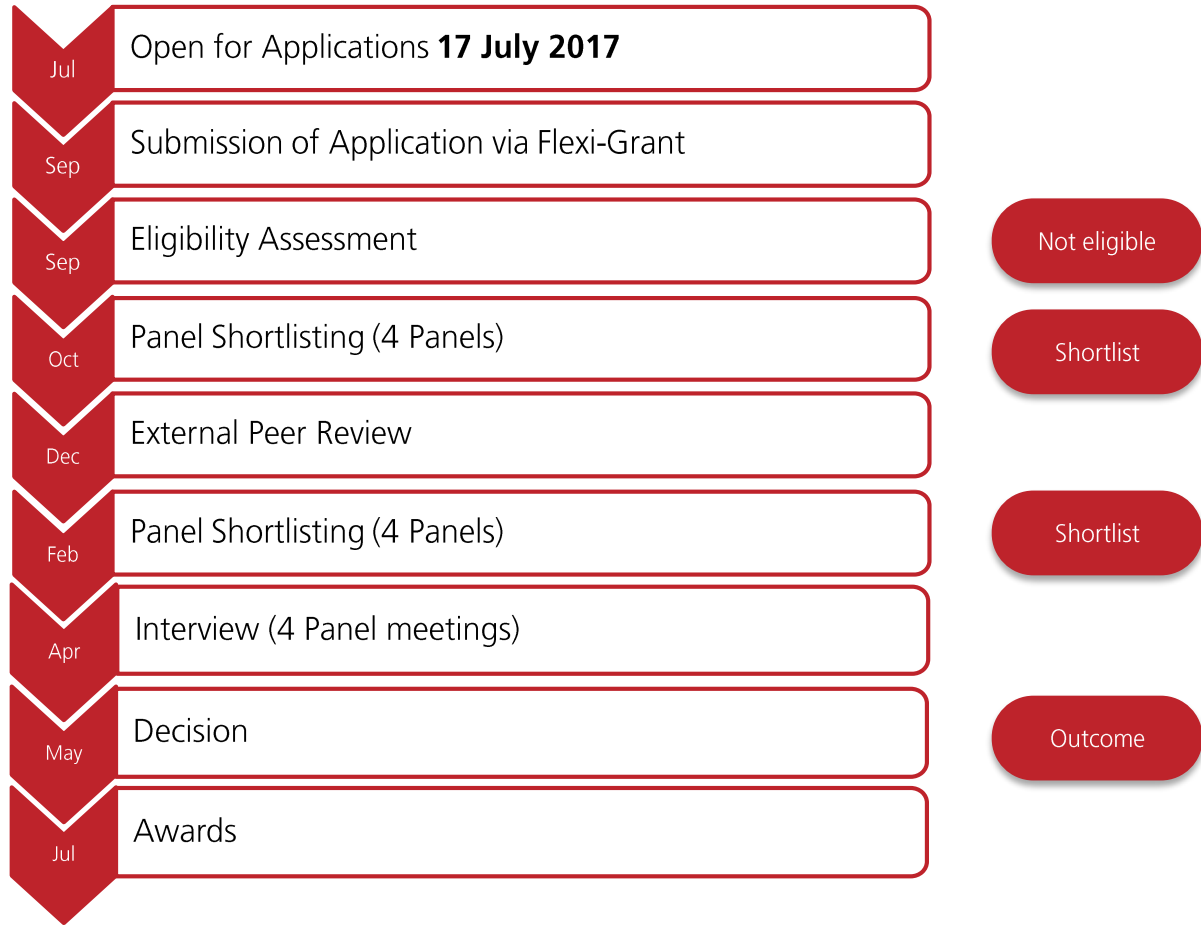
Dr Toby Cubitt
University Research Fellow
University College London



‘Starter’ Research Grants

- Only 1st year Research Fellows eligible
- Funding for research-related costs, including postgraduate students
- Up to €176,000 for 48 months
- Invitation to apply

Application Process





Success!

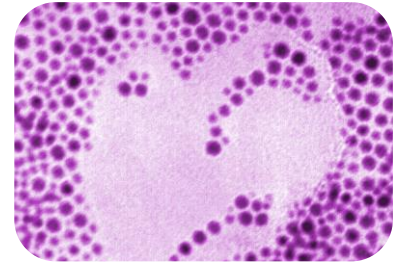
Applications – What are we looking for?



Excellent
scientific merit



Track Record



Creativity



Validity of
hypothesis



Career
development



Host
institution

Hints & tips!



Read the
scheme notes



Write a good
lay summary



Be
enthusiastic



Leave plenty
of time



Contact us

Interviews

- The interview will be conducted by a panel of committee members
- Two main assessors will lead the interview, but all panel members can ask questions
- Candidates will be asked to give a brief overview of their applications and area of research

The questions will focus on the following issues:

- The science of the application
- Developments since the submission of the application
- The choice of host institution/research group
- The route of independence
- Any issues needing further clarification



Frequently Asked Questions

Success rates

- Varies from scheme to scheme and year to year depending on the number of applications, awards available...
- Remember – don't be put off by statistics, you need to apply to be successful!

Diversity

- The Society recognises that many talented individuals do not fulfil their scientific potential due to various issues and barriers and we are committed to helping to put this right.
- We are currently addressing this through measures such as improving promotion and reviewing our selection processes.

Feedback & Re-applying

- Limited feedback is available for those who are unsuccessful (depending on the stage reached in the application process).
- For most of our schemes we welcome people to reapply.
- Get in contact with us and speak to the relevant Scheme Manager.

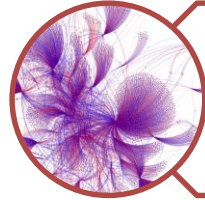
Why apply for an RS-SFI University Research Fellowship?



Prestigious



Flexible



**Added
value**



2016 New Research Fellows' Induction Day

“My University Research Fellowship provided me the opportunity to pursue independent blue-skies and applied research, while connecting me to a large interdisciplinary network of world-class scientists”

Dr Steven Spoel
University Research Fellow
University of Edinburgh



Contact details

royalsociety.org/grants

URF@royalsociety.org

(0044) 20 7451 2500

Twitter: [@royalsociety](https://twitter.com/royalsociety)

Scientist Newsletter: royalsociety.org/stay-in-touch/email-newsletters/